

BEST PRACTICES FOR TECHNOLOGY AND CYBERSECURITY

Joint Region 1 and 7 Leadership Meeting

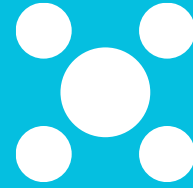
May 17, 2024

Albuquerque, New Mexico

Technology/Operations Birds of a Feather

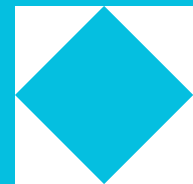
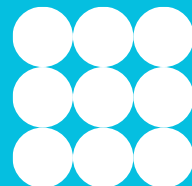
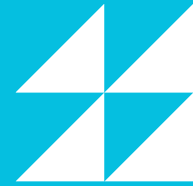
Facilitated by Erica Grong



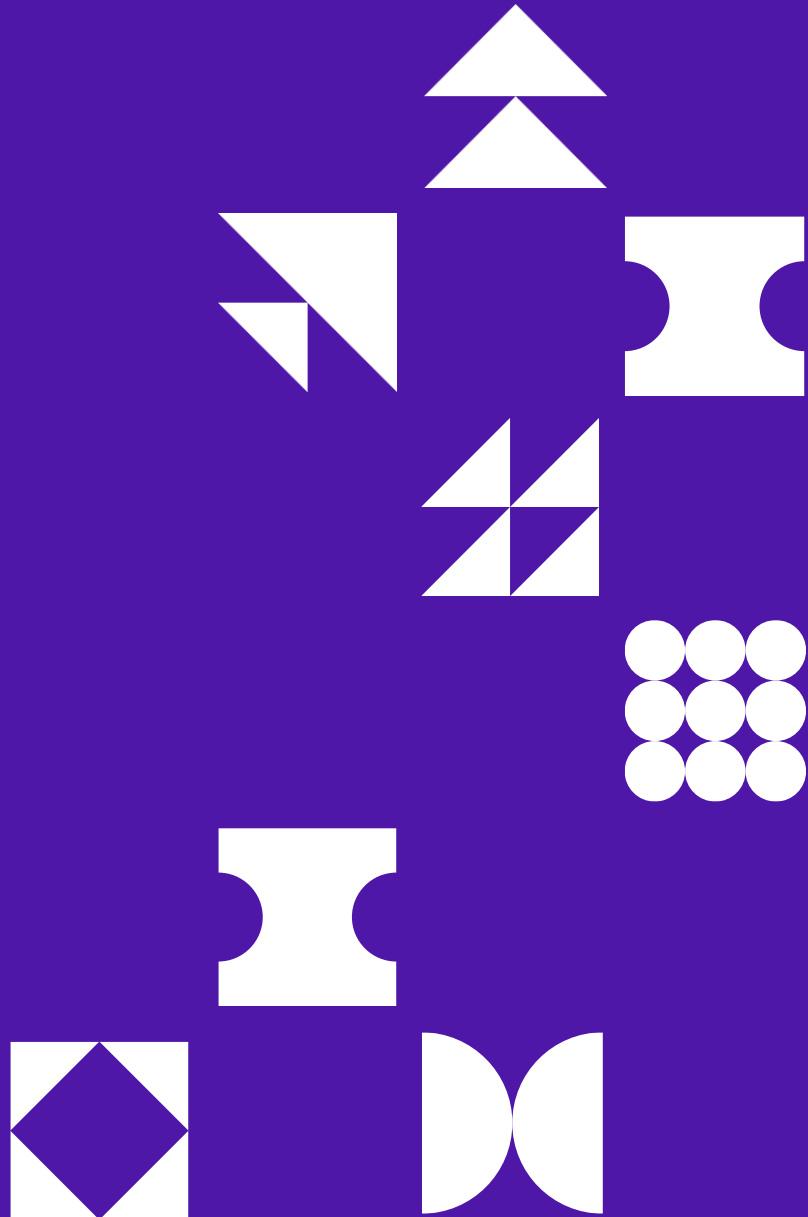
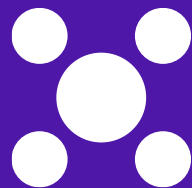


AGENDA

- Technology Challenges
- Cybersecurity Challenges
- How Rio Grande Chapter Addressed These Challenges
- Open Discussion



TECHNOLOGY CHALLENGES



Technology Challenges

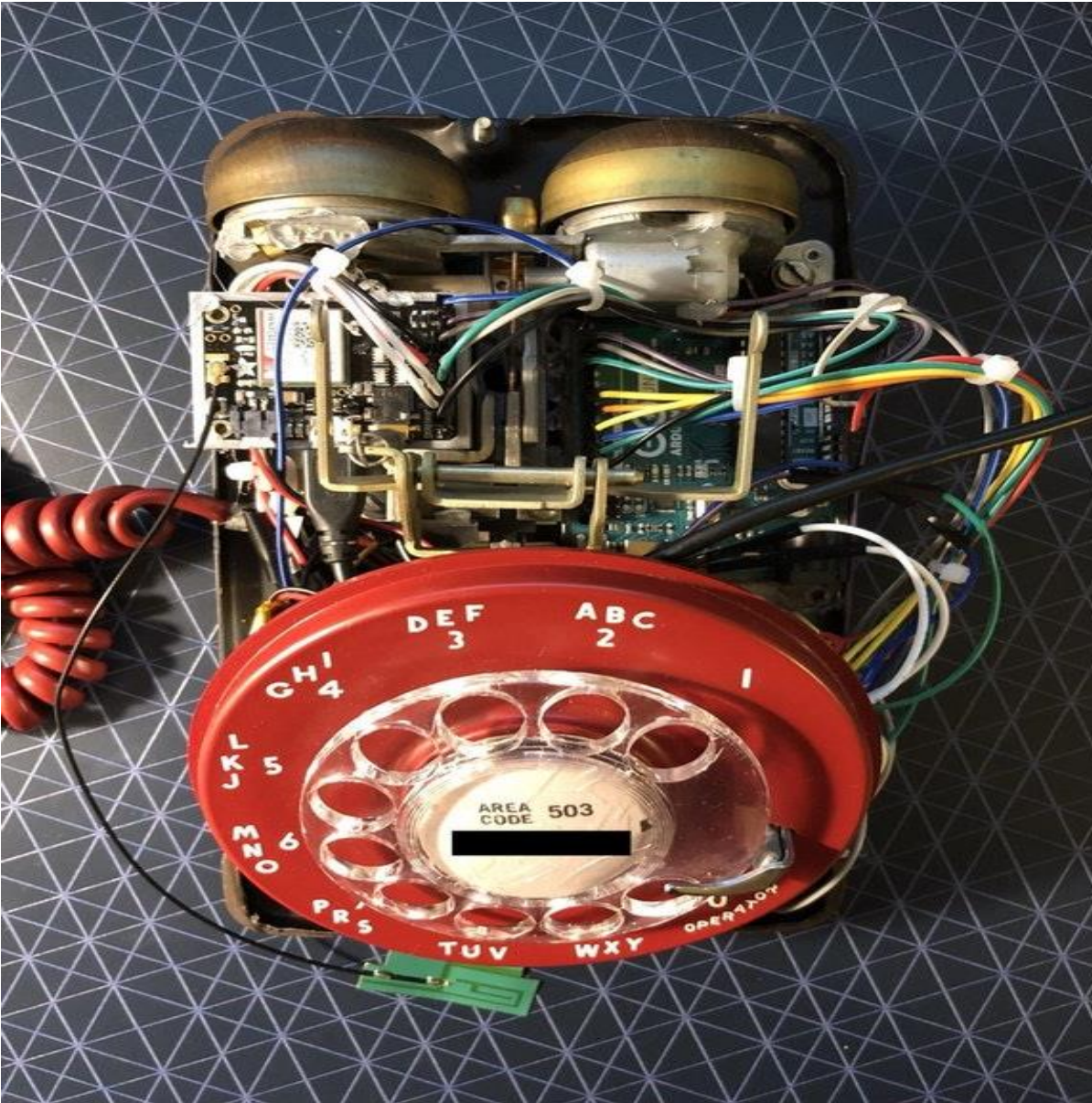
Limited Budget

- *Nonprofits often operate with constrained financial resources, which can limit their ability to invest in robust cybersecurity measures and technologies.*

Data Management

- *Properly managing and securing large volumes of data, including membership details, financial transactions, and project documentation, can be a significant challenge.*





Technology Challenges

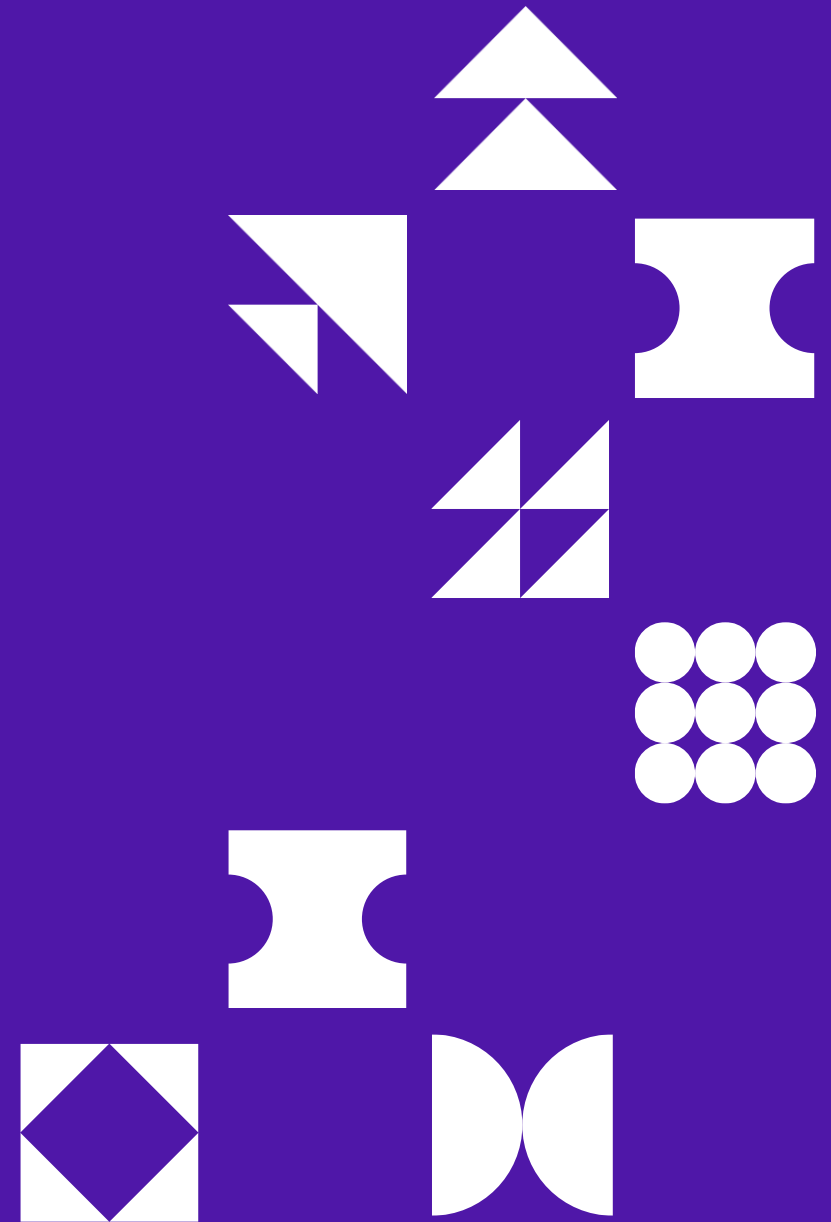
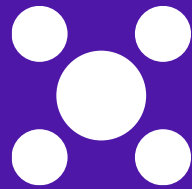
Reliance on Legacy Systems

- *Nonprofits often rely on legacy systems that are not only outdated but also lack support and compatibility with newer technologies.*

Integration of Systems

- *Difficulty in integrating various technology platforms and systems, such as membership management, event scheduling, and communication tools, can hinder operational efficiency.*

CYBERSECURITY CHALLENGES



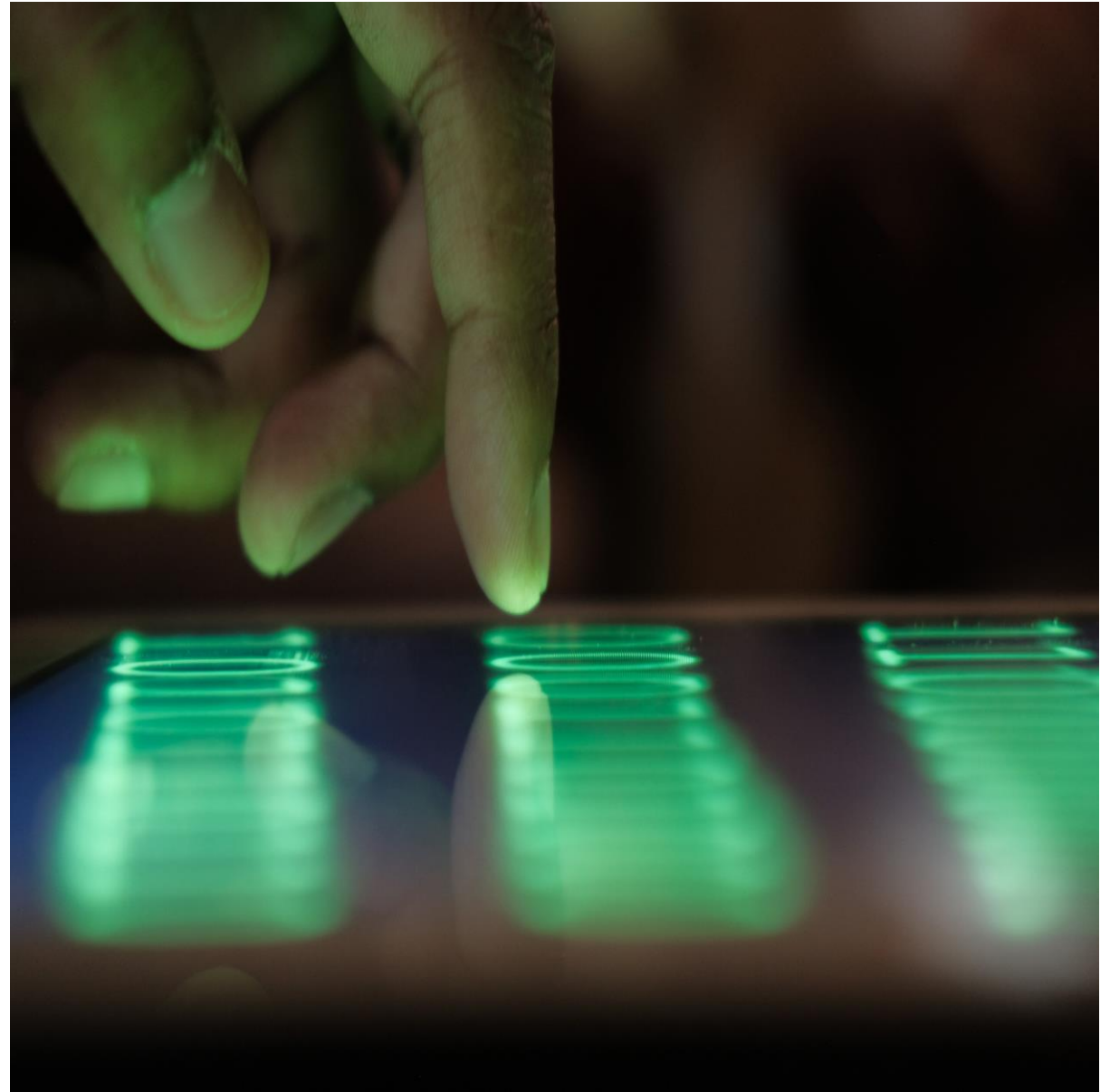
Cybersecurity Challenges

Limited Budget

- *Nonprofits often operate with constrained financial resources, which can limit their ability to invest in robust cybersecurity measures and technologies*

Data Privacy

- *Managing sensitive information such as member details, purchase transactions, and proprietary data securely is crucial but challenging without proper security protocols*





Cybersecurity Challenges

Volunteer Staff

- *Reliance on volunteers, who may not have specialized knowledge in cybersecurity, can increase the risk of accidental data breaches or mishandling of information.*

Outdated Technology

- *Nonprofits might use outdated software and hardware due to budget constraints, making them vulnerable to attacks that exploit known security flaws.*

Cybersecurity Challenges

Phishing Attacks

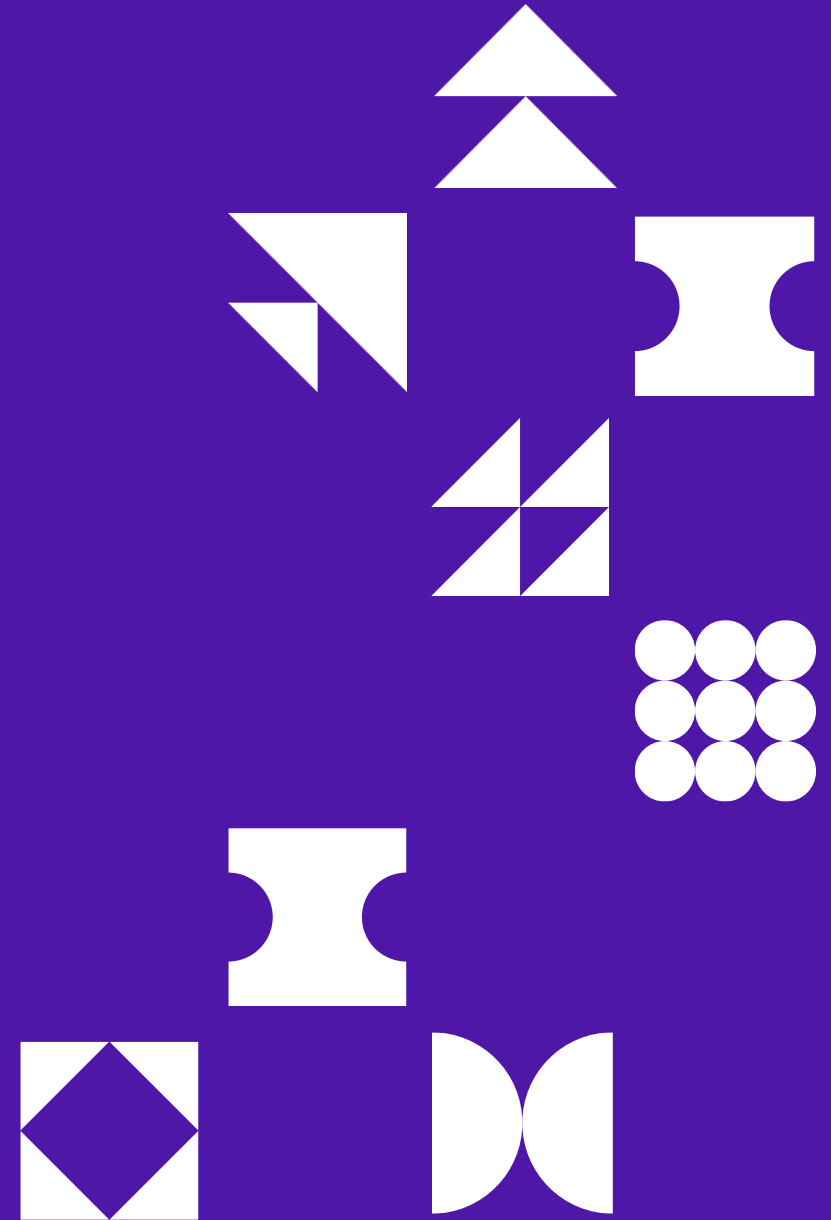
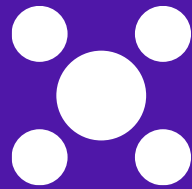
- *These are common threats where attackers disguise themselves as legitimate entities to steal sensitive data. Nonprofits are attractive targets due to their broad, trust-based networks.*

Compliance and Regulations

- *Understanding and complying with relevant data protection regulations can be complex and require resources that nonprofits might lack.*



WHAT RIO GRANDE CHAPTER DID TO ADDRESS THESE CHALLENGES



PMI Rio Grande Chapter

Our Process

- Inventory
- Set a Security Baseline
- Policy Changes
- Training

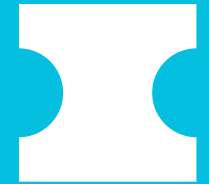
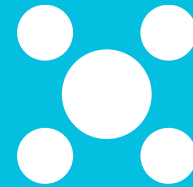
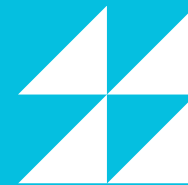
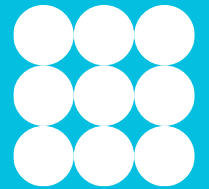
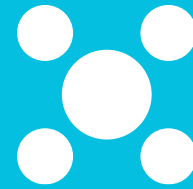
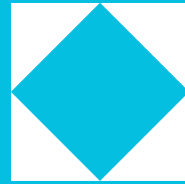
Resources to Share:

- PMI-RGC's System Security Plan
- PMI-RGC's Annual Cybersecurity Training presentation/video





THANK YOU!



ERICA GRONG
DIRECTOR OF TECHNOLOGY
technology@pmirgc.org

How to obtain PDUs for this session:

1. Scan this QR code to the Mentimeter Survey
2. Enter Your Name
3. Complete the Presentation Evaluation

If you are having issues with scanning the QR code, then either use the URL listed below or see the session facilitator or registration desk for assistance.

URL: <https://bit.ly/3Wy6hH1>

